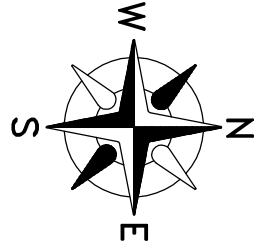


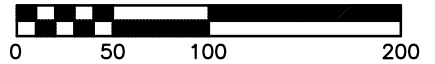
BUILDING ENVELOPE EXHIBIT

BEING LOTS 2 & 3, CSM NO. _____
 LOCATED IN THE NE 1/4 OF THE SE 1/4
 AND THE NW 1/4 OF THE SE 1/4,
 SECTION 13, T9N, R10E, VILLAGE OF
 WINDSOR, DANE COUNTY, WISCONSIN



BASIS OF BEARINGS
 THE EAST LINE OF THE SE 1/4 IS
 ASSUMED TO BEAR N00°32'13"W.

SCALE
 1" = 100'



LEGEND

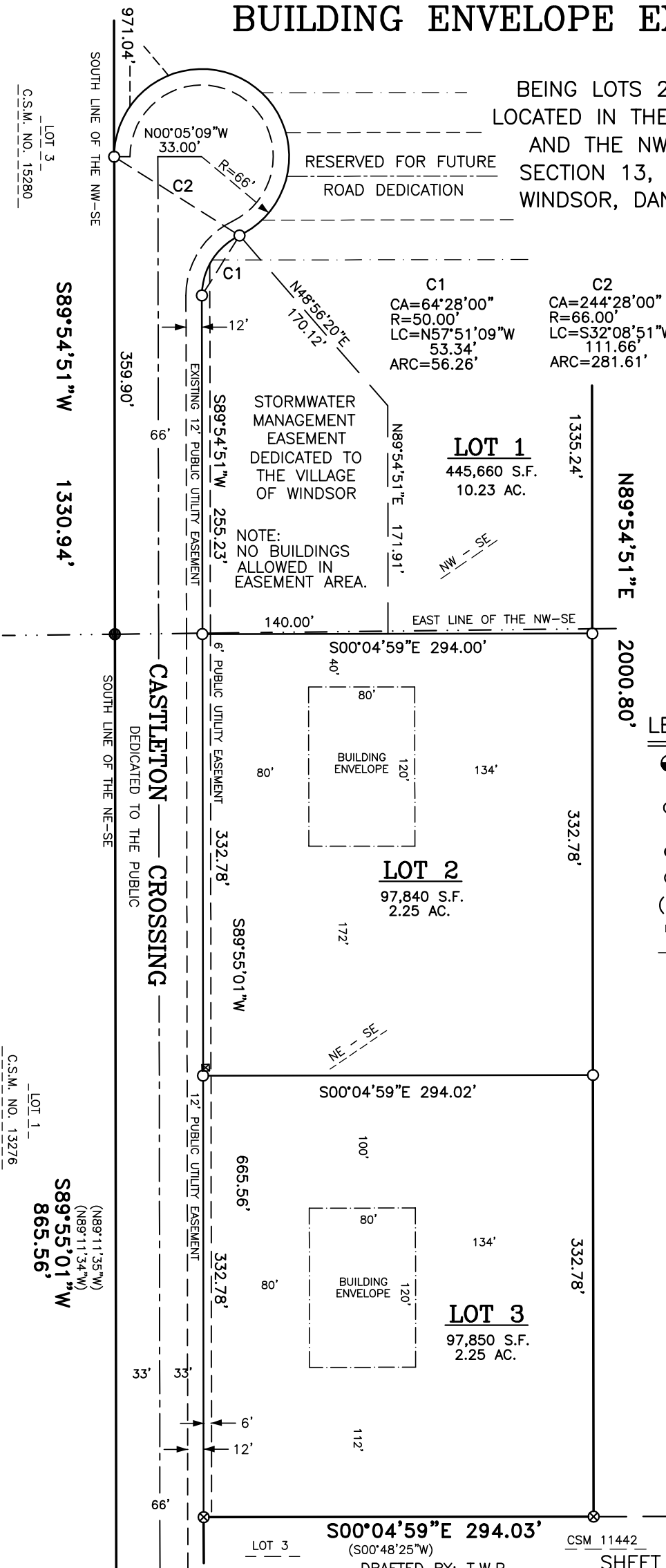
- ⊕ DANE COUNTY SECTION CORNER (FOUND) (AS NOTED W/ 4-TIES)
- 3/4" X 18" ROUND IRON RE-BAR WEIGHING 1.50 LBS/LF (SET)
- 2" IRON PIPE (FOUND)
- ⊗ 3/4" IRON RE-BAR (FOUND)
- () "RECORDED AS" INFORMATION
- ▣ UTILITY PEDESTAL
- FENCE LINE REMNANTS



LAND SURVEYING
DEFOREST, WI
608-846-2523

OWNER/SUBDIVIDER
 WINDSOR QUARRY LLC
 4607 Oak Spring Circle
 DeForest, WI 53532

SURVEYOR
 PAULSON & ASSOCIATES, LLC
 Daniel A. Paulson
 136 W. Holum Street
 DeForest, WI 53532



S00°04'59"E 294.03'
 (S00°48'25"W)

LOT 3

CSM 11442

DRAFTED BY: T.W.P.

SHEET 2 OF 4

FILE NO. 93-013(2022)

LOT 3
 C.S.M. NO. 15280

S89°54'51"W 1330.94'

SOUTH LINE OF THE NW-SE

359.90'

66'

EXISTING 12" PUBLIC UTILITY EASEMENT

S89°54'51"W 255.23'

STORMWATER
 MANAGEMENT
 EASEMENT
 DEDICATED TO
 THE VILLAGE
 OF WINDSOR

NOTE:
 NO BUILDINGS
 ALLOWED IN
 EASEMENT AREA.

140.00'

EAST LINE OF THE NW-SE

S00°04'59"E 294.00'

S00°04'59"E 294.00'

S00°04'59"E 294.00'

S00°04'59"E 294.00'

S00°04'59"E 294.00'

S00°04'59"E 294.00'

S00°04'59"E 294.00'

S00°04'59"E 294.00'

S00°04'59"E 294.00'

S00°04'59"E 294.00'

S00°04'59"E 294.00'

S00°04'59"E 294.00'

S00°04'59"E 294.00'

S00°04'59"E 294.00'

S00°04'59"E 294.00'

S00°04'59"E 294.00'

S00°04'59"E 294.00'

S00°04'59"E 294.00'

S00°04'59"E 294.00'

S00°04'59"E 294.00'

S00°04'59"E 294.00'

S00°04'59"E 294.00'

S00°04'59"E 294.00'

S00°04'59"E 294.00'

S00°04'59"E 294.00'

S00°04'59"E 294.00'

S00°04'59"E 294.00'

S00°04'59"E 294.00'

S00°04'59"E 294.00'

S00°04'59"E 294.00'

S00°04'59"E 294.00'

SOUTH LINE OF THE NE-SE

CASTLETON CROSSING
 DEDICATED TO THE PUBLIC

6" PUBLIC UTILITY EASEMENT

6" PUBLIC UTILITY EASEMENT

S89°55'01"W 332.78'

S89°55'01"W 332.78'

S89°55'01"W 332.78'

S89°55'01"W 332.78'

S89°55'01"W 332.78'

S89°55'01"W 332.78'

S89°55'01"W 332.78'

S89°55'01"W 332.78'

LOT 1
 C.S.M. NO. 13276
 S89°55'01"W
 (N89°11'35"W)
 (N89°11'34"W)
 865.56'

33'

33'

6'

12'

66'

66'

66'

66'

66'

66'

66'

66'

971.04'

971.04'

971.04'

971.04'

971.04'

971.04'

971.04'

971.04'

971.04'

971.04'

971.04'

971.04'

971.04'

971.04'

971.04'

971.04'

971.04'

971.04'

971.04'

971.04'

971.04'

971.04'

971.04'

971.04'

971.04'

971.04'

971.04'

971.04'

971.04'

971.04'

971.04'

971.04'

971.04'

971.04'

971.04'

971.04'

971.04'

971.04'

971.04'

971.04'

971.04'

971.04'

971.04'

971.04'

971.04'

971.04'

971.04'

971.04'

971.04'

971.04'

971.04'

971.04'

971.04'

971.04'

971.04'

971.04'

971.04'

971.04'

971.04'

971.04'

971.04'

971.04'

971.04'

971.04'