



RIVERSTONE *Townhomes*

DeForest, WI



*Kelly Bennett
& Associates*



Office (608) 825-9553
Cell (608) 220-6699
Kelly@FirstWeber.com



RIVERSTONETOWNHOME.COM



RIVERSTONE *Townhomes*



Quality built 2 story townhouses with nearly 1,900 sq ft, screen porch, 3 bedrooms, 2 1/2 baths, spacious kitchen & dining area with granite countertops, Amish custom cabinets, stainless steel appliances, great room with gas fireplace and huge windows, owner's suite with walk in closet, main level laundry, covered private entrance & 2 car attached garage.

Option to finish lower level prior to closing,

(LL option: family room, 4th bedroom / office and 3rd full bath.)

Steps from the Upper Yahara River bike and walking trails & Sunfish Pond.

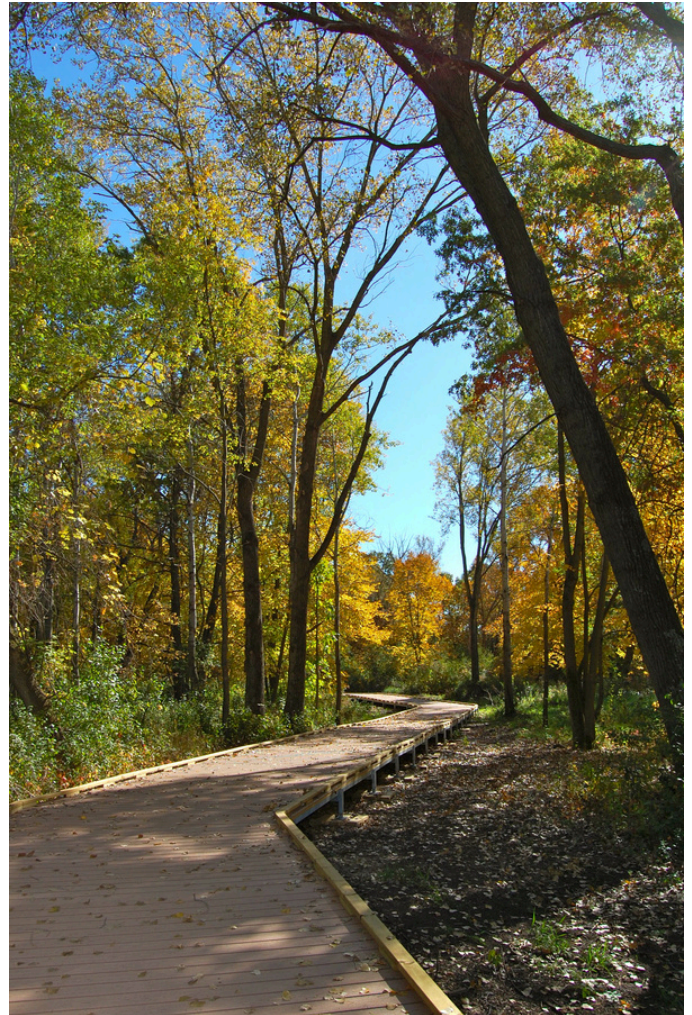


RIVERSTONETOWNHOME.COM

Yahara River Trail Neighborhood Amenities Include:

- Sunfish Pond: Outfitted with an ADA fishing dock and stocked by the parks department.
- Conservancy Place Trail System: Part of the Upper Yahara River Trail. DeForest maintains over 10 miles of trails.
- More than 100 different bird species have been observed in the Upper Yahara Trail park system.

RIVERSTONE *Townhomes*



RIVERSTONE *Townhomes*



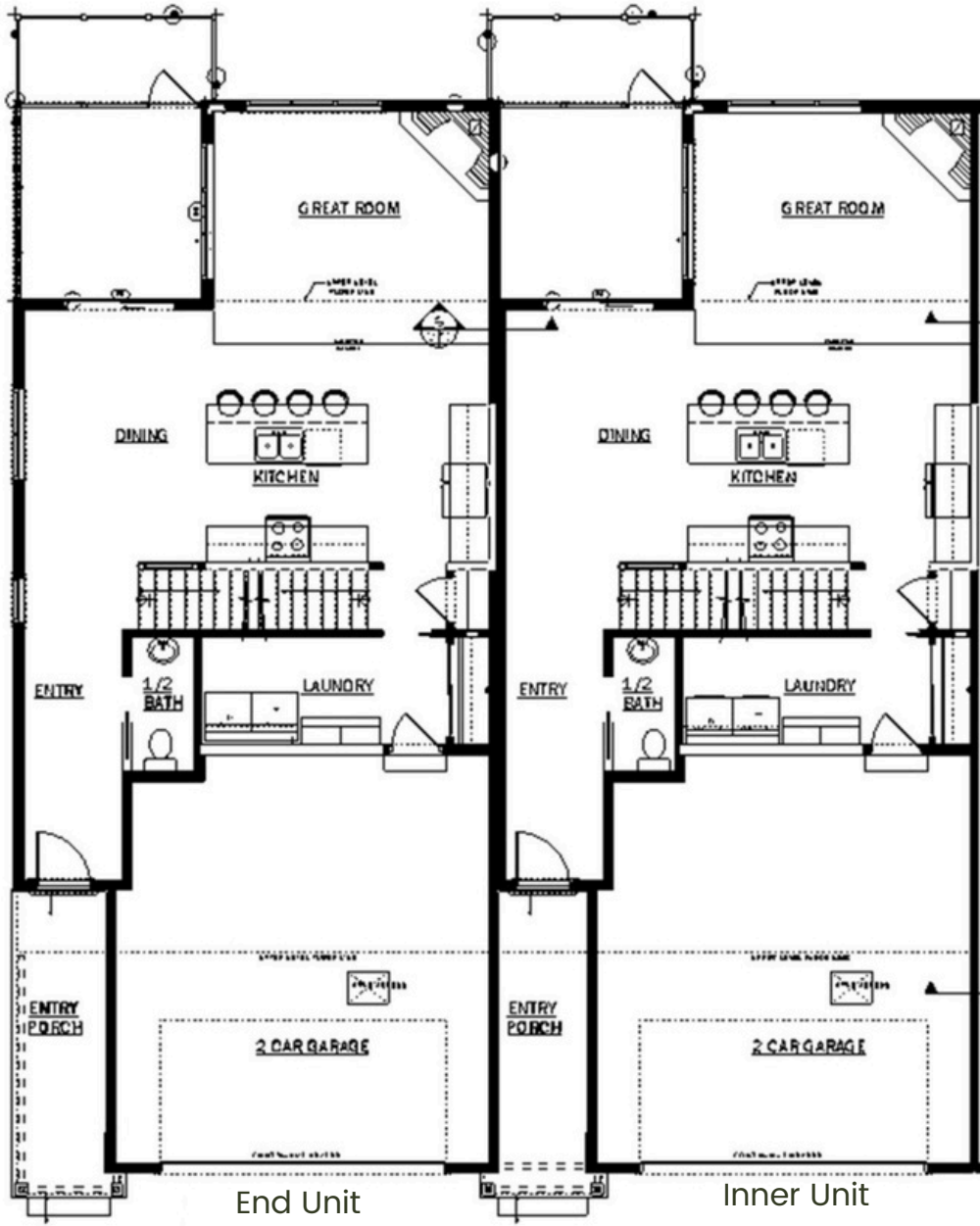
Sunfish Pond

Kelli Ezzell / Settlers best Credit Union
4021 Meridian Drive, Windsor
608-842-5031 or 608-577-9250
kezzell@settlerswi.com NMLS #502466

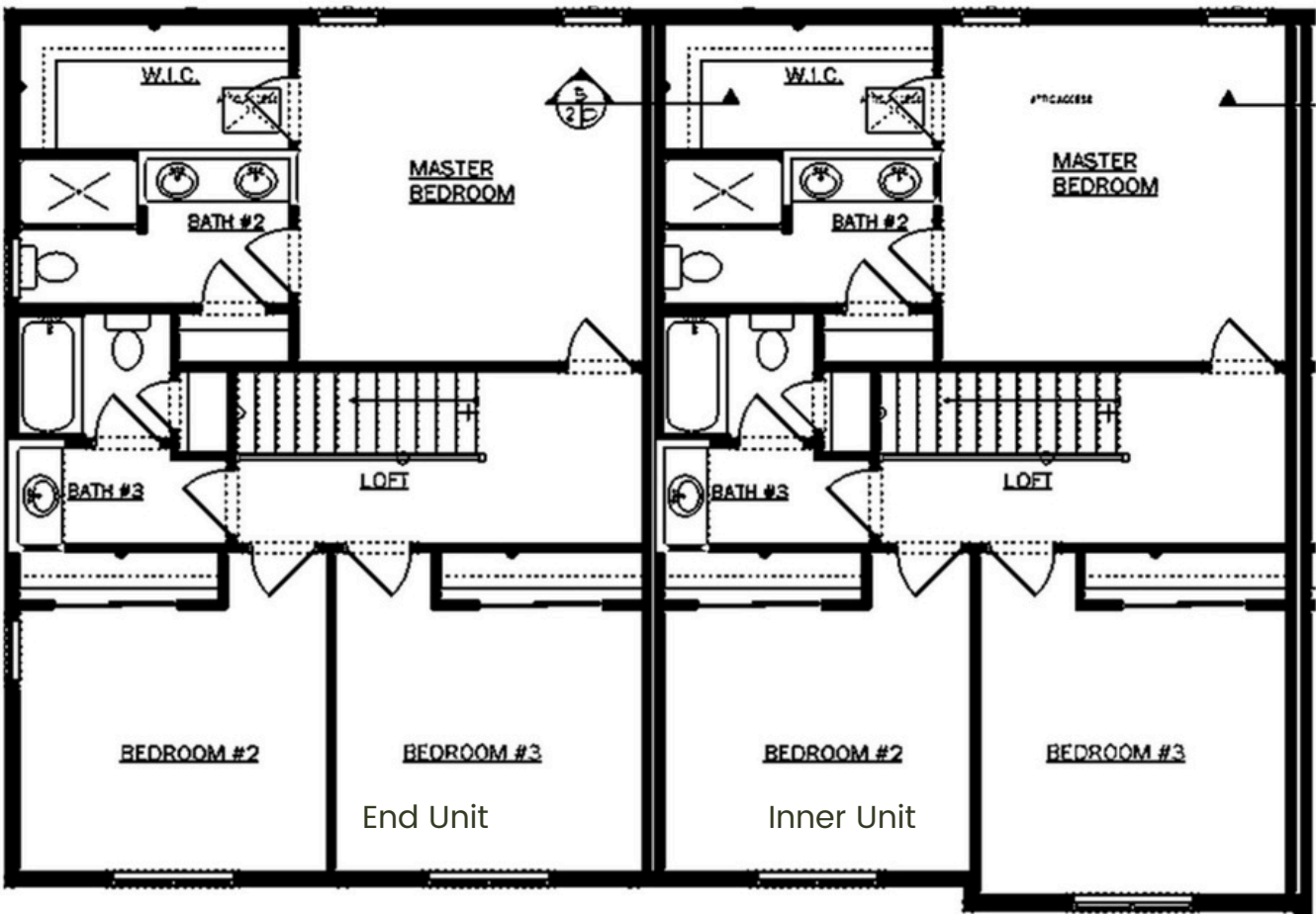
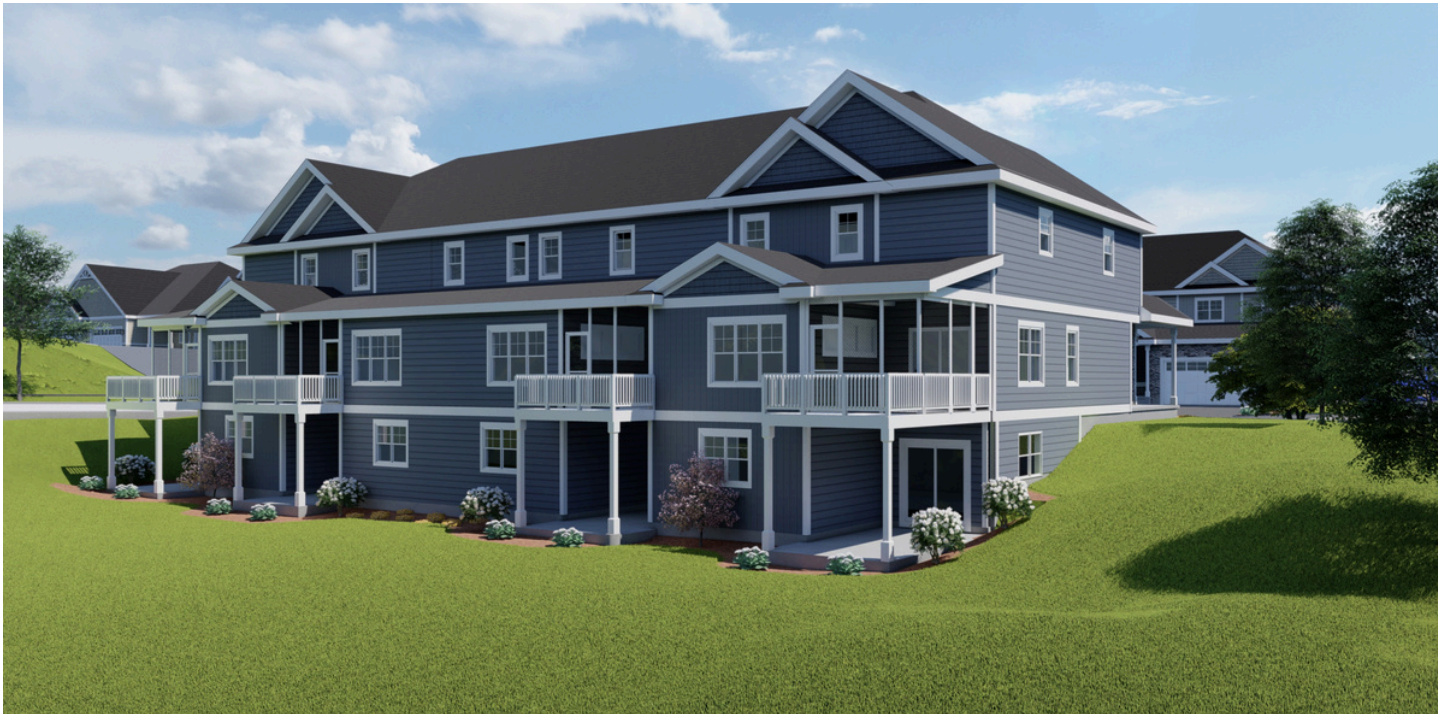
Corey Randl / One Community Bank
1351 Water Wheel Drive, Waunakee
608-852-7865 or 608-849-3075
crandl@onecommunity.bank NMLS #500032

Contact Preferred Lenders for more information on products and rates.

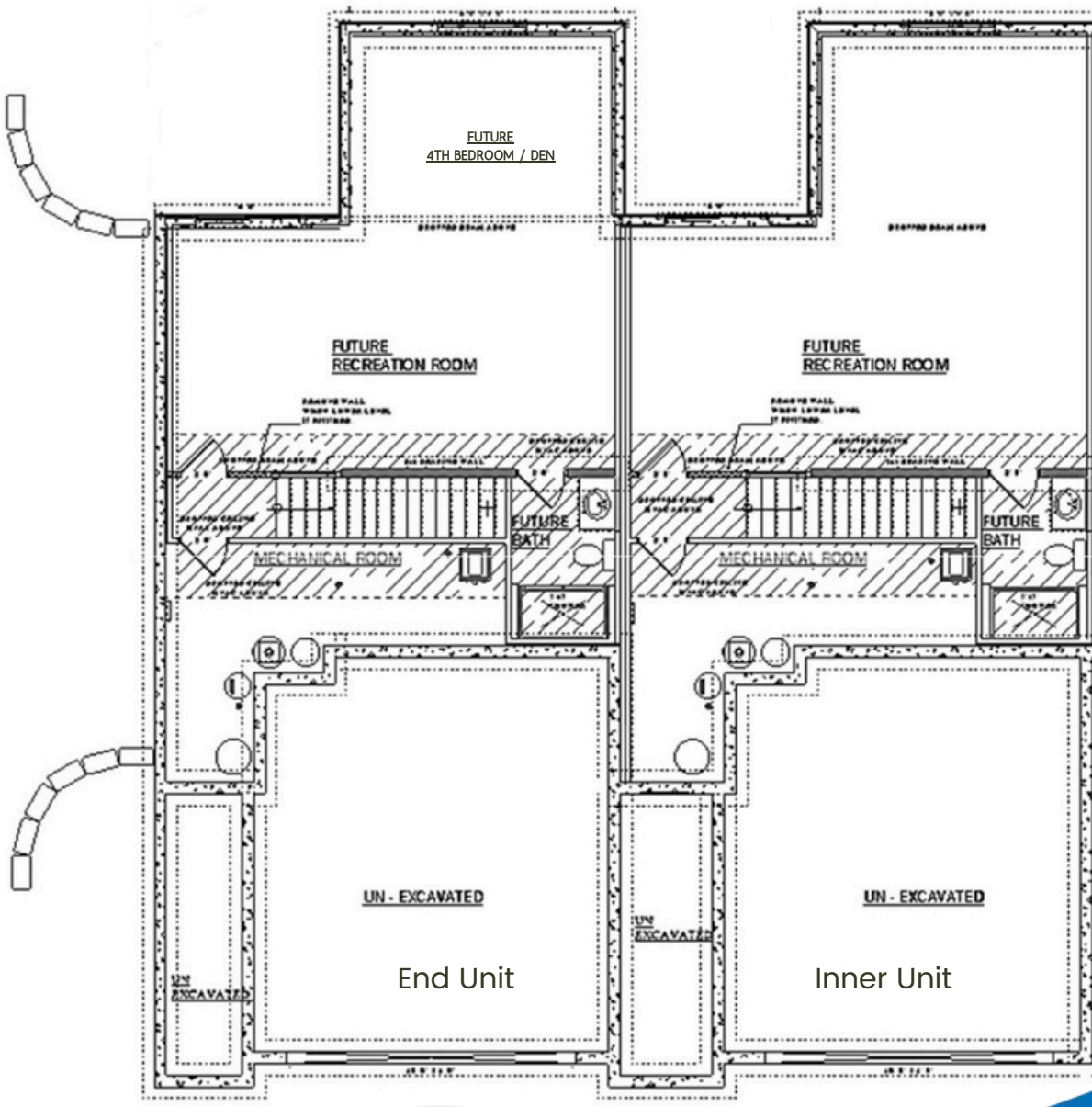
Preferred Lenders



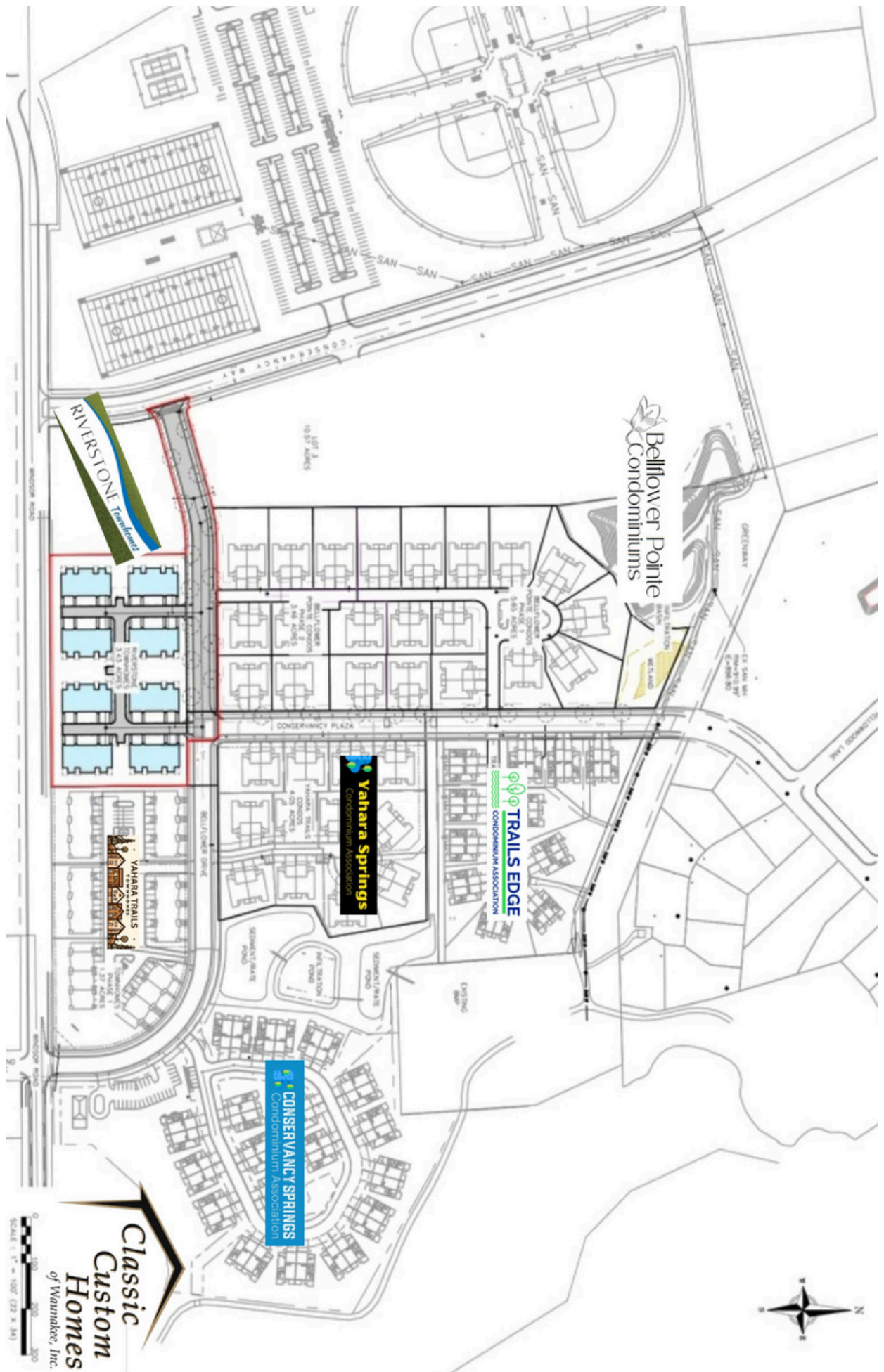
Main Level Floor Plan



Upper Level Floor Plan



Optional Lower Level Floor Plan



Classic Custom Homes
of Waunakee, Inc.

Neighborhood Site Plan

Exterior Features

- Owens Corning Shingles
- James Hardie - Cement Board
- Haas Garage Doors



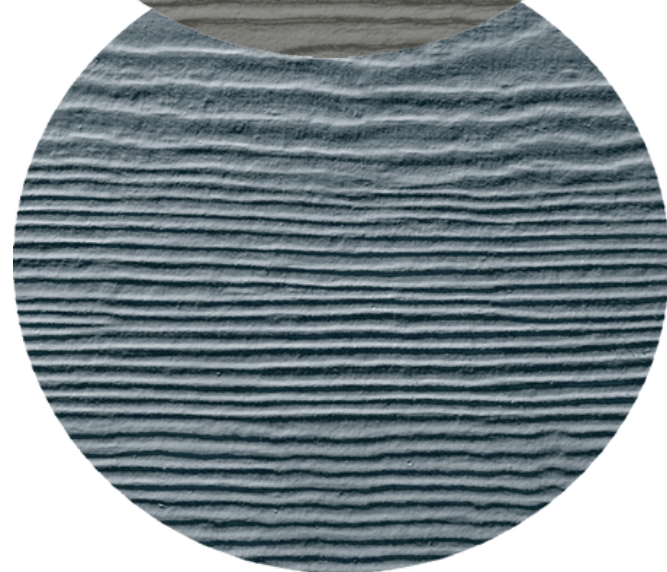
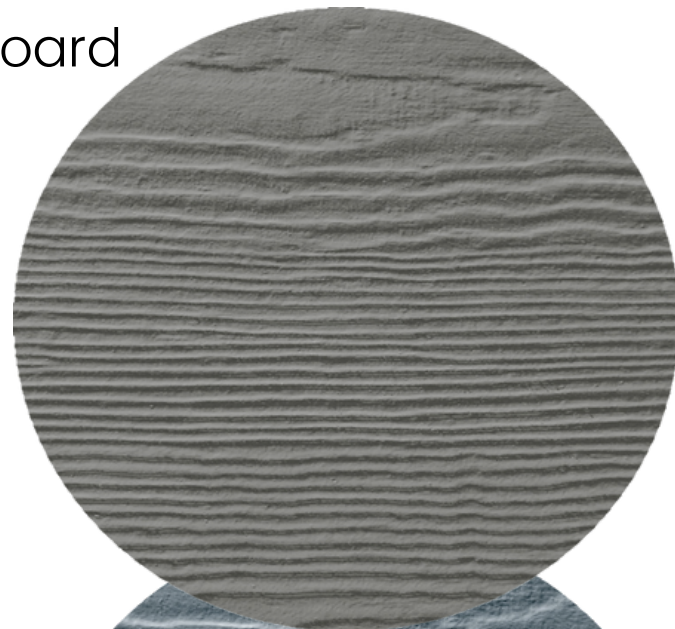
Roofing



Trim

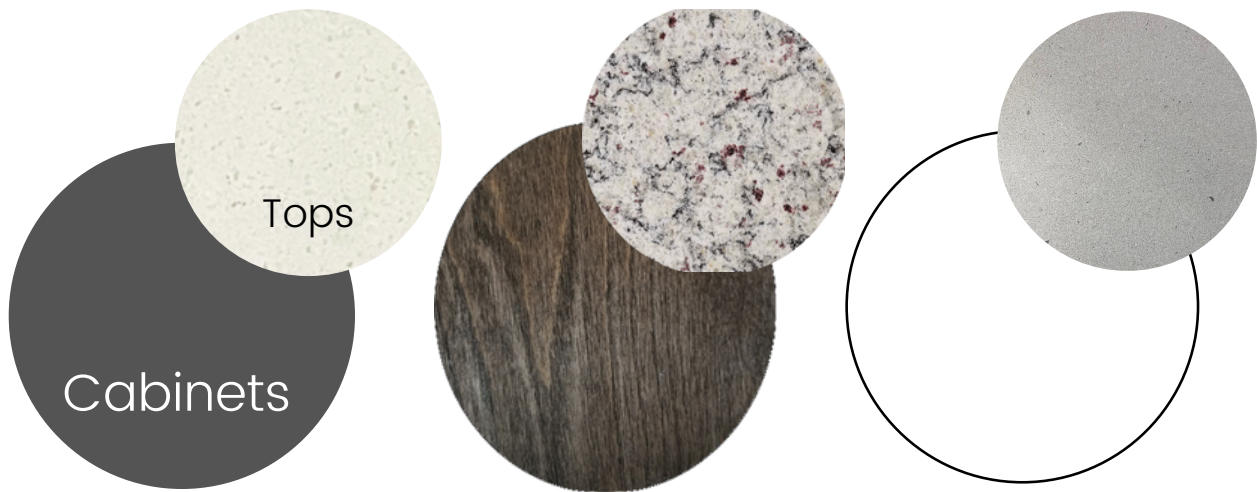


Masonry



Interior Features

- Kohler plumbing fixtures
- High efficiency furnace w/ programmable thermostat
- Spaceguard air filter
- Upgraded lighting and electrical package
- Blown-in-blanket insulation with R55 attic
- Gas fireplace with surround and mantel
- All interior walls batted for sound
- Custom Amish cabinetry
- Large white trim & solid core doors
- Schlage door hardware
- Granite or quartz countertops
- Kitchen appliance package
- Bath hardware and custom-sized vanity mirrors
- Blinds on interior windows



Carpet



RIVERSTONE Townhomes



For More Information or to Reserve Unit Contact:

Kelly Bennett & Associates

Cell: 608-220-6699

Office: 608-825-9553

Email: Kelly@FirstWeber.com



DIRECTIONS:

**From Madison: take I-39 to exit 131 to
left on Hwy 19, right on Lake Rd (CV),
left on Windsor Rd to right on
Bellflower Drive, DeForest WI
(Near Sunfish Pond)**