

These are no objections to this plat with respect to Section 19.15, 19.16, 19.17, 19.18 and 19.19 of the Ordinance on Platting as amended by Ordinance No. 2001-11, which Ordinance is hereby approved by the Board of Commissioners of the County of Washington, D.C.

Approved by the Board of Commissioners  
*Robert W. White*  
Department of Administration

DATE: 10/18/05

BY: *Robert W. White*

BY: *Robert W. White*

BY: *Robert W. White*

BY: *Robert W. White*

BY: *Robert W. White*

BY: *Robert W. White*

BY: *Robert W. White*

BY: *Robert W. White*

BY: *Robert W. White*

BY: *Robert W. White*

BY: *Robert W. White*

BY: *Robert W. White*

BY: *Robert W. White*

BY: *Robert W. White*

BY: *Robert W. White*

BY: *Robert W. White*

BY: *Robert W. White*

BY: *Robert W. White*

BY: *Robert W. White*

BY: *Robert W. White*

BY: *Robert W. White*

BY: *Robert W. White*

BY: *Robert W. White*

BY: *Robert W. White*

BY: *Robert W. White*

BY: *Robert W. White*

BY: *Robert W. White*

**CITY OF SAN FRANCISCO**  
PLANNING DEPARTMENT  
COMMUNITY DEVELOPMENT DIVISION  
PLANNING COMMISSION  
150 GOLDEN GATE AVENUE, 15TH FLOOR  
SAN FRANCISCO, CALIFORNIA 94102  
TELEPHONE: (415) 376-2000  
FAX: (415) 376-2001  
WWW.SANFRANCISCO.CA.GOV



**CITY OF SAN FRANCISCO**  
PLANNING DEPARTMENT  
COMMUNITY DEVELOPMENT DIVISION  
PLANNING COMMISSION  
150 GOLDEN GATE AVENUE, 15TH FLOOR  
SAN FRANCISCO, CALIFORNIA 94102  
TELEPHONE: (415) 376-2000  
FAX: (415) 376-2001  
WWW.SANFRANCISCO.CA.GOV

**CITY OF SAN FRANCISCO**  
PLANNING DEPARTMENT  
COMMUNITY DEVELOPMENT DIVISION  
PLANNING COMMISSION  
150 GOLDEN GATE AVENUE, 15TH FLOOR  
SAN FRANCISCO, CALIFORNIA 94102  
TELEPHONE: (415) 376-2000  
FAX: (415) 376-2001  
WWW.SANFRANCISCO.CA.GOV

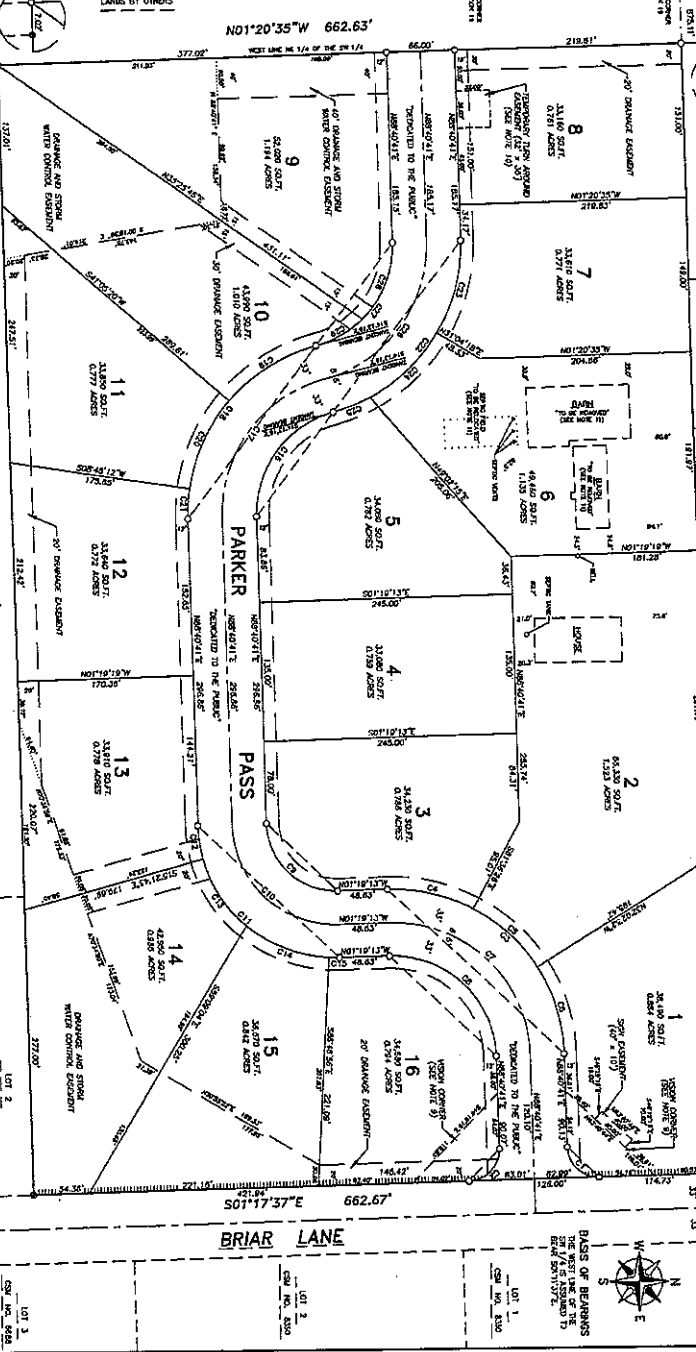
**CITY OF SAN FRANCISCO**  
PLANNING DEPARTMENT  
COMMUNITY DEVELOPMENT DIVISION  
PLANNING COMMISSION  
150 GOLDEN GATE AVENUE, 15TH FLOOR  
SAN FRANCISCO, CALIFORNIA 94102  
TELEPHONE: (415) 376-2000  
FAX: (415) 376-2001  
WWW.SANFRANCISCO.CA.GOV

**CITY OF SAN FRANCISCO**  
PLANNING DEPARTMENT  
COMMUNITY DEVELOPMENT DIVISION  
PLANNING COMMISSION  
150 GOLDEN GATE AVENUE, 15TH FLOOR  
SAN FRANCISCO, CALIFORNIA 94102  
TELEPHONE: (415) 376-2000  
FAX: (415) 376-2001  
WWW.SANFRANCISCO.CA.GOV

**PARKER'S PLACE**  
LOCATED BY THE N.E. 1/4 OF SECTION 18  
RANGE 11E, TOWNSHIP 38N, COUNTY OF WASHINGTON, DISTRICT OF COLUMBIA  
SECTION 19  
N88°40'22"E 1094.59'

**PARKER PASS**  
SECTION 19  
N88°40'29"W 1094.01'

**BRIAR LANE**  
SECTION 19  
S01°17'37"E 662.67'



**LEGEND**

- 1. DUE COUNTY AUTOMATIC MAPPING (TOWN)
- 2. T.O.A. BOUNDARY (TOWN)
- 3. T.O.A. BOUNDARY (COUNTY)
- 4. T.O.A. BOUNDARY (DISTRICT)
- 5. T.O.A. BOUNDARY (SECTION)
- 6. T.O.A. BOUNDARY (TOWNSHIP)
- 7. T.O.A. BOUNDARY (RANGE)
- 8. T.O.A. BOUNDARY (MOUNTAIN RANGE)
- 9. T.O.A. BOUNDARY (WATER COURSE)
- 10. T.O.A. BOUNDARY (ROAD)
- 11. T.O.A. BOUNDARY (RAILROAD)
- 12. T.O.A. BOUNDARY (DRAINAGE CANAL)
- 13. T.O.A. BOUNDARY (DRAINAGE CANAL)
- 14. T.O.A. BOUNDARY (DRAINAGE CANAL)
- 15. T.O.A. BOUNDARY (DRAINAGE CANAL)
- 16. T.O.A. BOUNDARY (DRAINAGE CANAL)

**RESTRICTIONS, NOTES AND NOTES**

- NO OTHER, PRIVATE OR PUBLIC USE TO BE MADE OF ANY OF THE LOTS HEREIN DESCRIBED WITHOUT THE WRITTEN CONSENT OF THE BOARD OF SUPERVISORS OF THE COUNTY OF WASHINGTON, DISTRICT OF COLUMBIA.
- THE LOTS HEREIN DESCRIBED SHALL BE USED ONLY FOR THE PURPOSES SPECIFIED IN THE PLAT.
- THE TOWN AND RANGE BOUNDARIES SHOWN ON THIS PLAT ARE BASED ON THE TOWN AND RANGE BOUNDARIES SHOWN ON THE PLAT OF THE DISTRICT OF COLUMBIA, DISTRICT OF COLUMBIA, DATED 1900.
- THE TOWNSHIP AND RANGE BOUNDARIES SHOWN ON THIS PLAT ARE BASED ON THE TOWNSHIP AND RANGE BOUNDARIES SHOWN ON THE PLAT OF THE DISTRICT OF COLUMBIA, DISTRICT OF COLUMBIA, DATED 1900.
- THE TOWNSHIP AND RANGE BOUNDARIES SHOWN ON THIS PLAT ARE BASED ON THE TOWNSHIP AND RANGE BOUNDARIES SHOWN ON THE PLAT OF THE DISTRICT OF COLUMBIA, DISTRICT OF COLUMBIA, DATED 1900.
- THE TOWNSHIP AND RANGE BOUNDARIES SHOWN ON THIS PLAT ARE BASED ON THE TOWNSHIP AND RANGE BOUNDARIES SHOWN ON THE PLAT OF THE DISTRICT OF COLUMBIA, DISTRICT OF COLUMBIA, DATED 1900.
- THE TOWNSHIP AND RANGE BOUNDARIES SHOWN ON THIS PLAT ARE BASED ON THE TOWNSHIP AND RANGE BOUNDARIES SHOWN ON THE PLAT OF THE DISTRICT OF COLUMBIA, DISTRICT OF COLUMBIA, DATED 1900.
- THE TOWNSHIP AND RANGE BOUNDARIES SHOWN ON THIS PLAT ARE BASED ON THE TOWNSHIP AND RANGE BOUNDARIES SHOWN ON THE PLAT OF THE DISTRICT OF COLUMBIA, DISTRICT OF COLUMBIA, DATED 1900.
- THE TOWNSHIP AND RANGE BOUNDARIES SHOWN ON THIS PLAT ARE BASED ON THE TOWNSHIP AND RANGE BOUNDARIES SHOWN ON THE PLAT OF THE DISTRICT OF COLUMBIA, DISTRICT OF COLUMBIA, DATED 1900.
- THE TOWNSHIP AND RANGE BOUNDARIES SHOWN ON THIS PLAT ARE BASED ON THE TOWNSHIP AND RANGE BOUNDARIES SHOWN ON THE PLAT OF THE DISTRICT OF COLUMBIA, DISTRICT OF COLUMBIA, DATED 1900.
- THE TOWNSHIP AND RANGE BOUNDARIES SHOWN ON THIS PLAT ARE BASED ON THE TOWNSHIP AND RANGE BOUNDARIES SHOWN ON THE PLAT OF THE DISTRICT OF COLUMBIA, DISTRICT OF COLUMBIA, DATED 1900.
- THE TOWNSHIP AND RANGE BOUNDARIES SHOWN ON THIS PLAT ARE BASED ON THE TOWNSHIP AND RANGE BOUNDARIES SHOWN ON THE PLAT OF THE DISTRICT OF COLUMBIA, DISTRICT OF COLUMBIA, DATED 1900.
- THE TOWNSHIP AND RANGE BOUNDARIES SHOWN ON THIS PLAT ARE BASED ON THE TOWNSHIP AND RANGE BOUNDARIES SHOWN ON THE PLAT OF THE DISTRICT OF COLUMBIA, DISTRICT OF COLUMBIA, DATED 1900.

**OWNER DATA TABLE**

LOT	OWNER	ADDRESS	REMARKS
1	...	...	...
2	...	...	...
3	...	...	...
4	...	...	...
5	...	...	...
6	...	...	...
7	...	...	...
8	...	...	...
9	...	...	...
10	...	...	...
11	...	...	...
12	...	...	...
13	...	...	...
14	...	...	...
15	...	...	...
16	...	...	...